

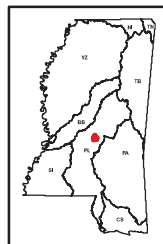
Base Data

Legend

- School
- Priority Watershed
- Major River
- Perennial Stream
- Intermittent Stream
- Large Lake/Pond
- US Highway
- State Highway
- Local Road
- County
- City
- Interstate

Ashlog Creek

031800020302



Mississippi Basins

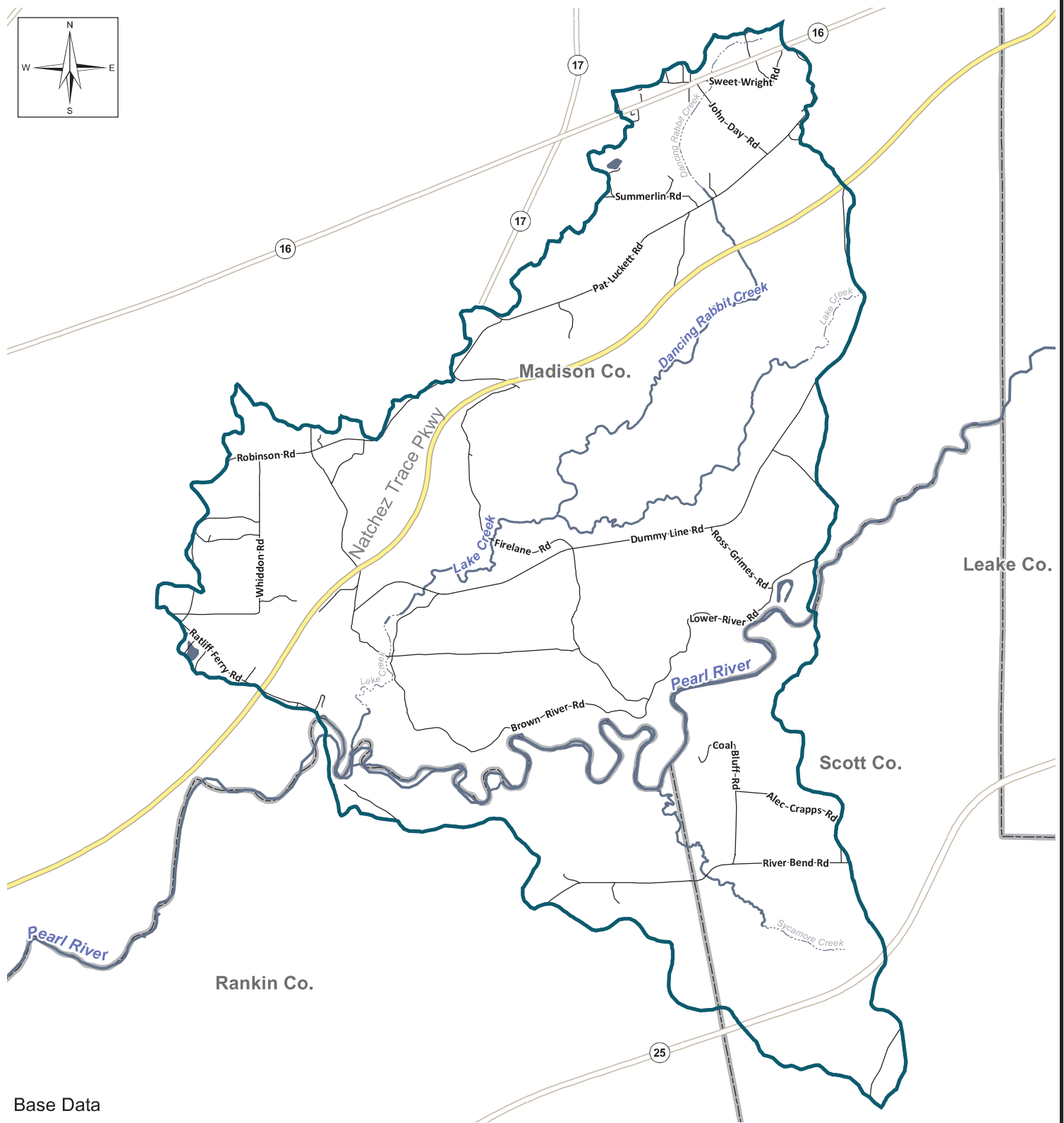
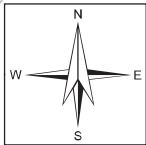
This map produced by the Department of Environmental Quality (MDEQ), Office of Pollution Control, Surface Water Division, Standards, Modeling, and TMDL Branch on **March 01, 2017**.

All map data is from the Mississippi Automated Resource Information System (MARIS), and MDEQ.

Map Projection: Mississippi Transverse Mercator

The Mississippi Department of Environmental Quality makes no warranties, expressed or implied, as to the accuracy, completeness, currentness, reliability, or suitability for any particular purpose, of the data contained on this map.



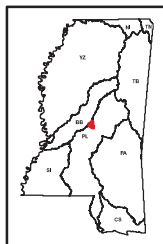


Base Data

Legend

- School
- Priority Watershed
- Major River
- Perennial Stream
- Intermittent Stream
- Large Lake/Pond
- Interstate
- US Highway
- State Highway
- Local Road
- County
- City

Lake Creek 031800020402



Mississippi Basins

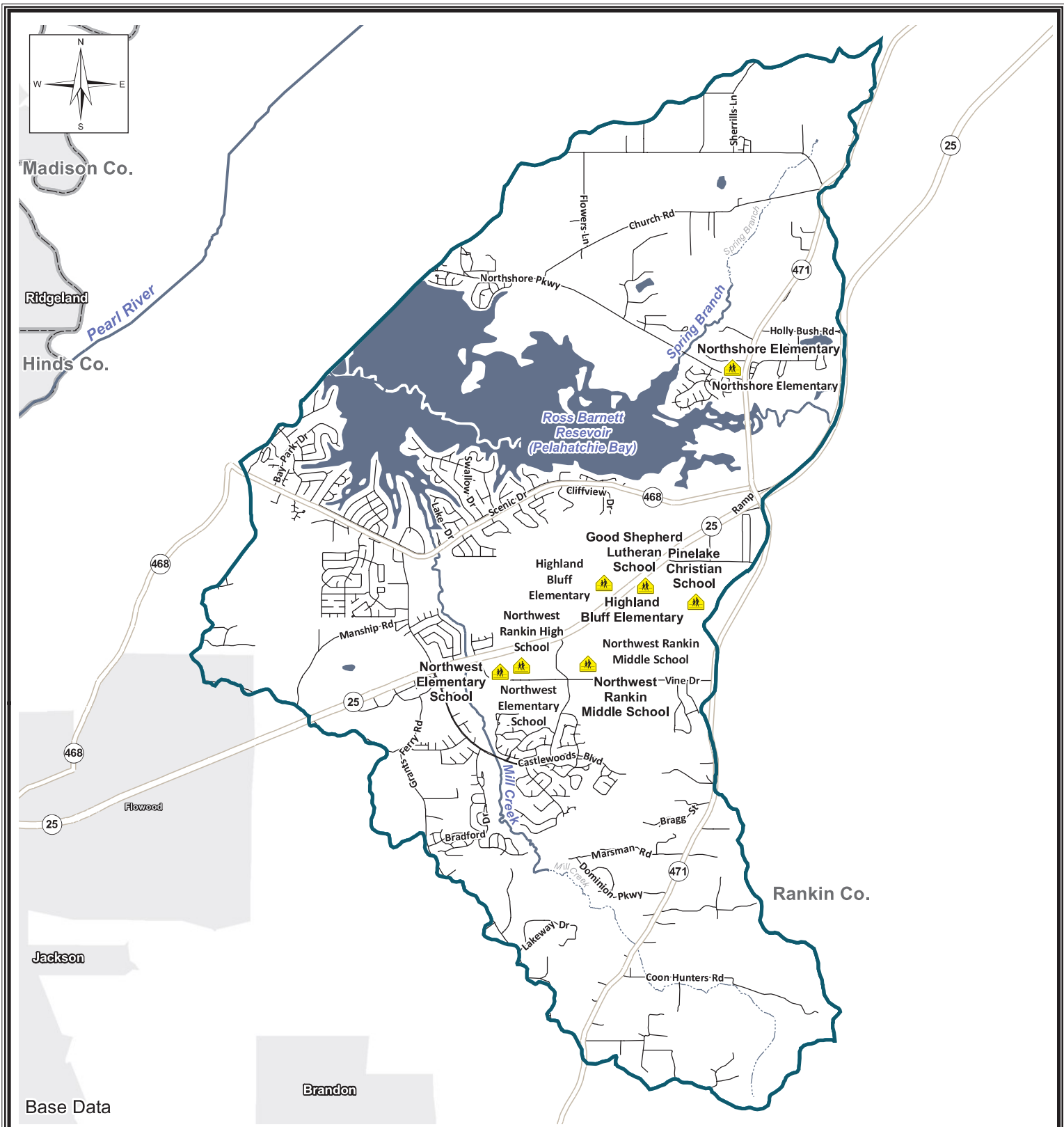
This map produced by the Department of Environmental Quality (MDEQ), Office of Pollution Control, Surface Water Division, Standards, Modeling, and TMDL Branch on March 01, 2017.

All map data is from the Mississippi Automated Resource Information System (MARIS), and MDEQ.

Map Projection: Mississippi Transverse Mercator

The Mississippi Department of Environmental Quality makes no warranties, expressed or implied, as to the accuracy, completeness, currentness, reliability, or suitability for any particular purpose, of the data contained on this map.





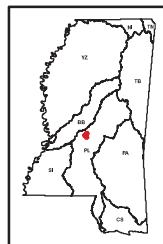
Base Data

Legend

- School
- Priority Watershed
- Major River
- Perennial Stream
- Intermittent Stream
- Large Lake/Pond
- Interstate
- US Highway
- State Highway
- Local Road
- County
- City

Mill Creek

031800020307



Mississippi Basins

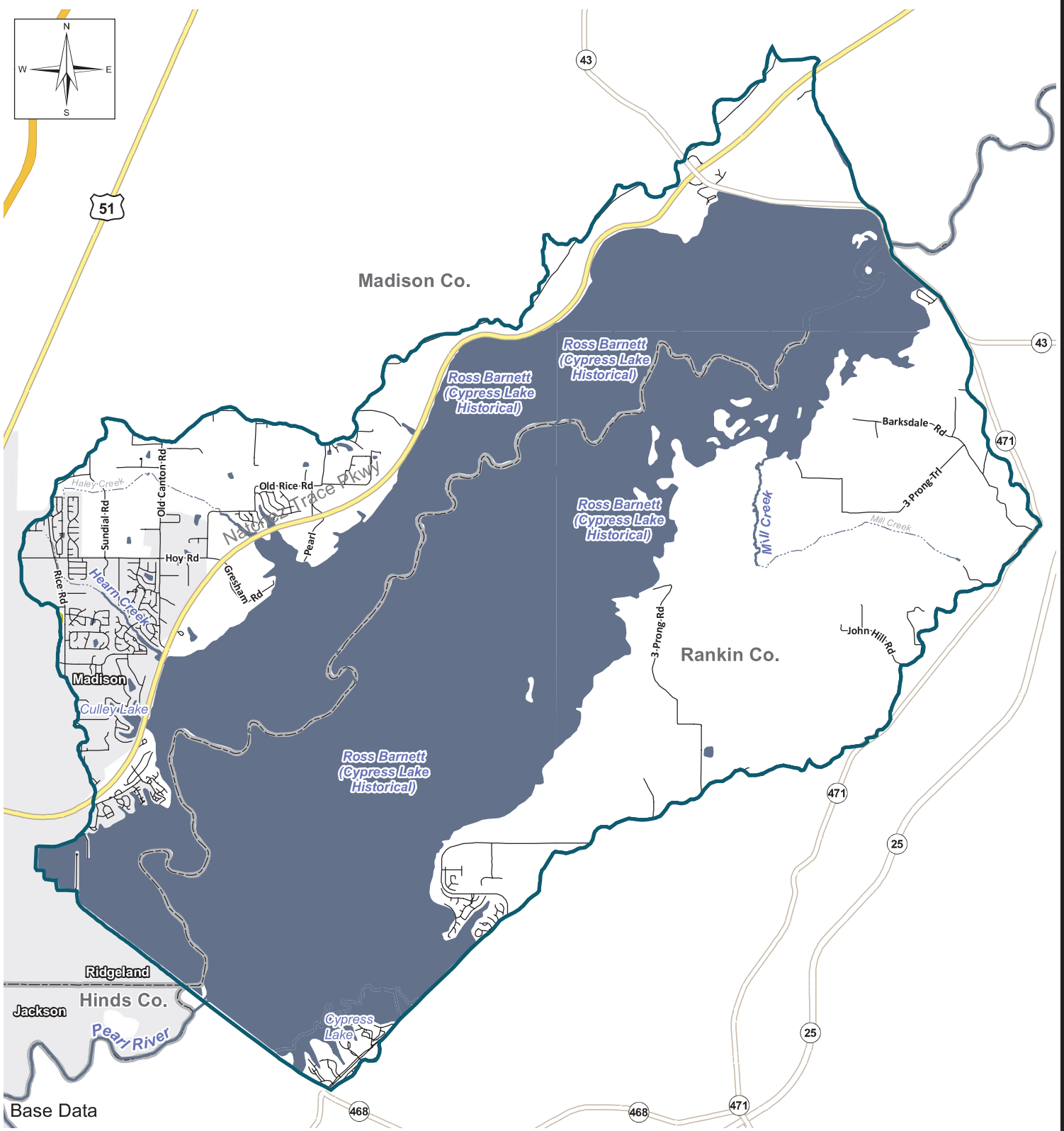
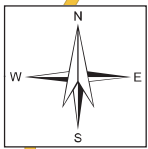
This map produced by the Department of Environmental Quality (MDEQ), Office of Pollution Control, Surface Water Division, Standards, Modeling, and TMDL Branch on March 01, 2017.

All map data is from the Mississippi Automated Resource Information System (MARIS), and MDEQ.

Map Projection: Mississippi Transverse Mercator

The Mississippi Department of Environmental Quality makes no warranties, expressed or implied, as to the accuracy, completeness, currentness, reliability, or suitability for any particular purpose, of the data contained on this map.





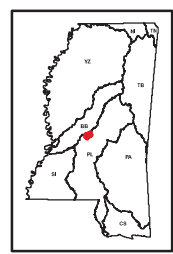
Base Data

Legend

- School
- Priority Watershed
- Major River
- Perennial Stream
- Intermittent Stream
- Large Lake/Pond
- Interstate
- US Highway
- State Highway
- Local Road
- County
- City

Mill Creek-Pearl River

031800020404



Mississippi Basins

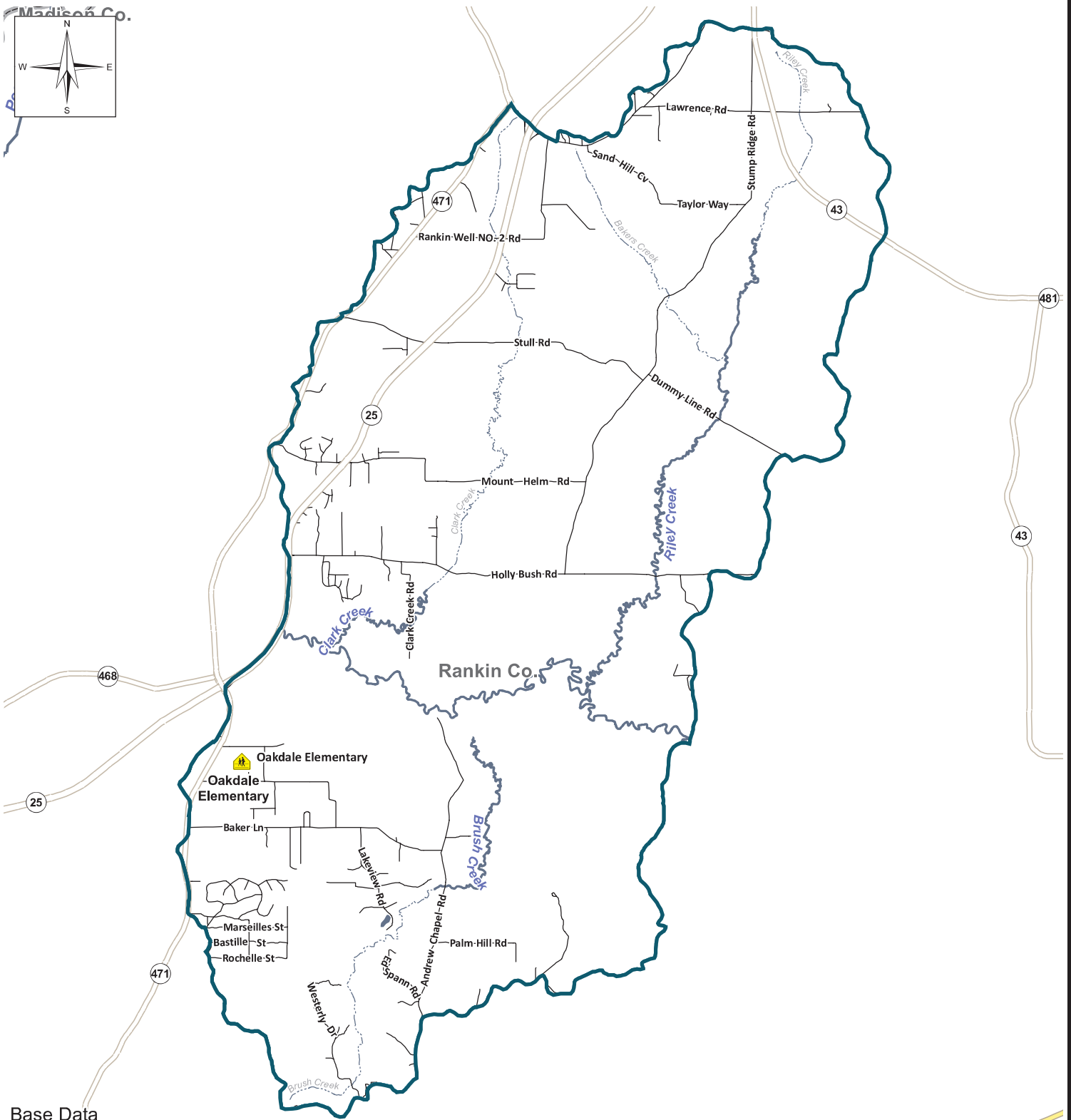
This map produced by the Department of Environmental Quality (MDEQ), Office of Pollution Control, Surface Water Division, Standards, Modeling, and TMDL Branch on **March 01, 2017**.

All map data is from the Mississippi Automated Resource Information System (MARIS), and MDEQ.

Map Projection: Mississippi Transverse Mercator

The Mississippi Department of Environmental Quality makes no warranties, expressed or implied, as to the accuracy, completeness, currentness, reliability, or suitability for any particular purpose, of the data contained on this map.





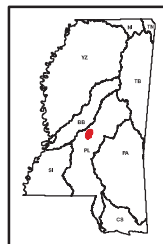
Base Data

Legend

- School
- Priority Watershed
- Major River
- Perennial Stream
- Intermittent Stream
- Large Lake/Pond
- Interstate
- US Highway
- State Highway
- Local Road
- County
- City

Riley Creek

031800020306



Mississippi Basins

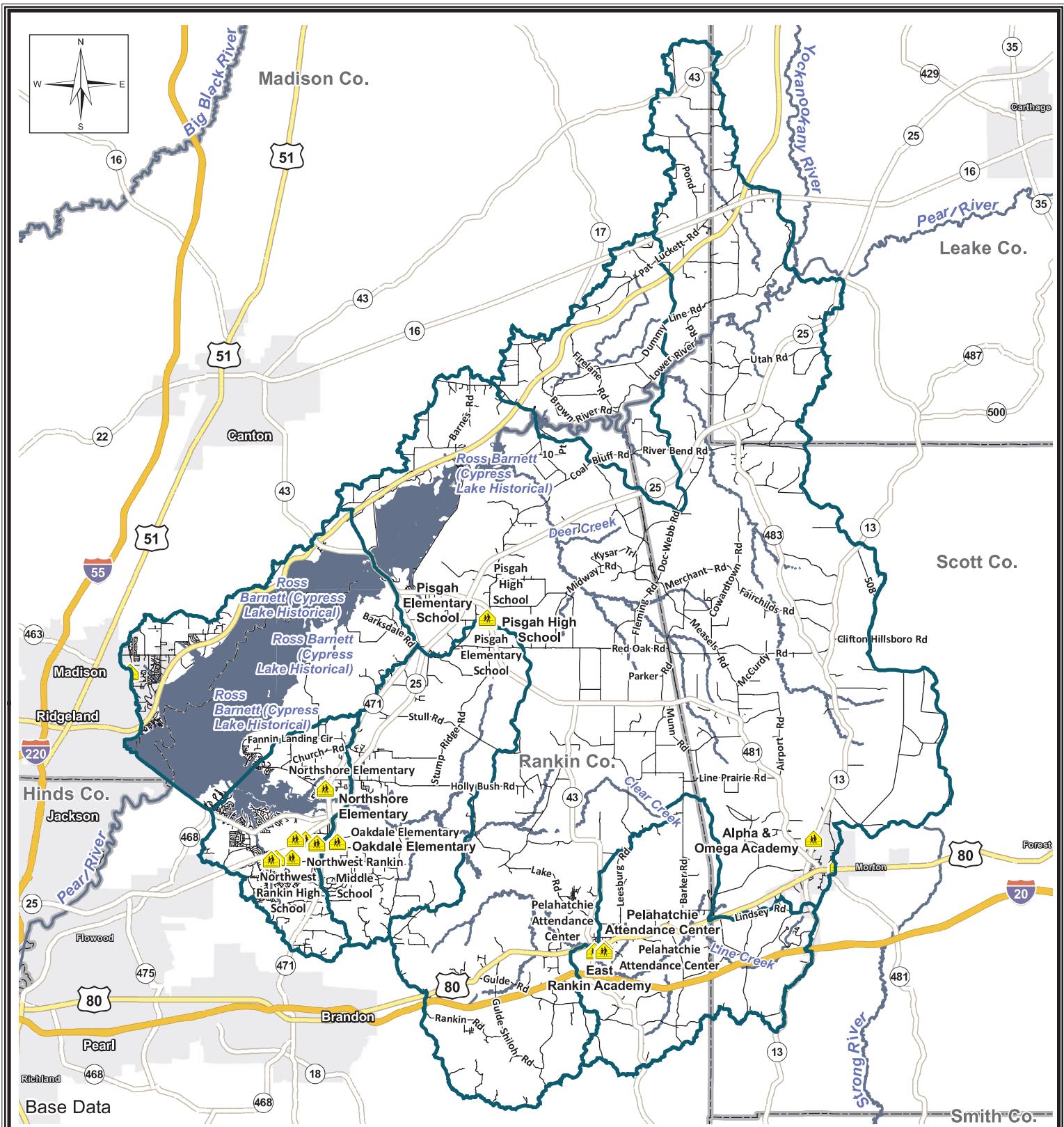
This map produced by the Department of Environmental Quality (MDEQ), Office of Pollution Control, Surface Water Division, Standards, Modeling, and TMDL Branch on **March 01, 2017**.

All map data is from the Mississippi Automated Resource Information System (MARIS), and MDEQ.

Map Projection: Mississippi Transverse Mercator

The Mississippi Department of Environmental Quality makes no warranties, expressed or implied, as to the accuracy, completeness, currentness, reliability, or suitability for any particular purpose, of the data contained on this map.



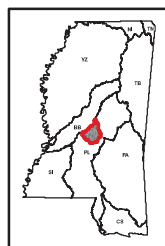


Legend

- School
- US Highway
- Priority Watershed
- State Highway
- Major River
- Local Road
- Perennial Stream
- County
- Large Lake/Pond
- City
- Interstate

Ross Barnett Reservoir Watershed

03180002



Mississippi Basins

This map produced by the Department of Environmental Quality (MDEQ), Office of Pollution Control, Surface Water Division, Standards, Modeling, and TMDL Branch on March 01, 2017.

All map data is from the Mississippi Automated Resource Information System (MARIS), and MDEQ.

Map Projection: Mississippi Transverse Mercator

The Mississippi Department of Environmental Quality makes no warranties, expressed or implied, as to the accuracy, completeness, currentness, reliability, or suitability for any particular purpose, of the data contained on this map.

