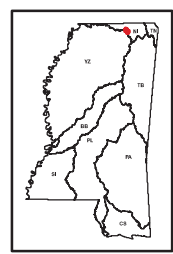


Base Data

- Legend**
- School
 - Priority Watershed
 - Major River
 - Perennial Stream
 - Intermittent Stream
 - Large Lake/Pond
 - Interstate
 - US Highway
 - State Highway
 - Local Road
 - County
 - City

Bell-Muddy Creek
080102070601



Mississippi Basins

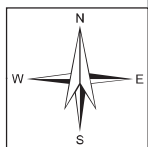
This map produced by the Department of Environmental Quality (MDEQ), Office of Pollution Control, Surface Water Division, Standards, Modeling, and TMDL Branch on March 01, 2017.

All map data is from the Mississippi Automated Resource Information System (MARIS), and MDEQ.

Map Projection: Mississippi Transverse Mercator

The Mississippi Department of Environmental Quality makes no warranties, expressed or implied, as to the accuracy, completeness, currentness, reliability, or suitability for any particular purpose, of the data contained on this map.





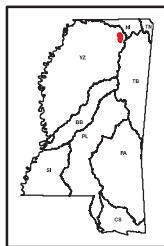
Benton Co.

Tippah Co.

Union Co.

Jasper Creek

080302010404



Mississippi Basins

Base Data

Legend

- School
- Priority Watershed
- Major River
- Perennial Stream
- Intermittent Stream
- Large Lake/Pond
- Interstate
- US Highway
- State Highway
- Local Road
- County
- City

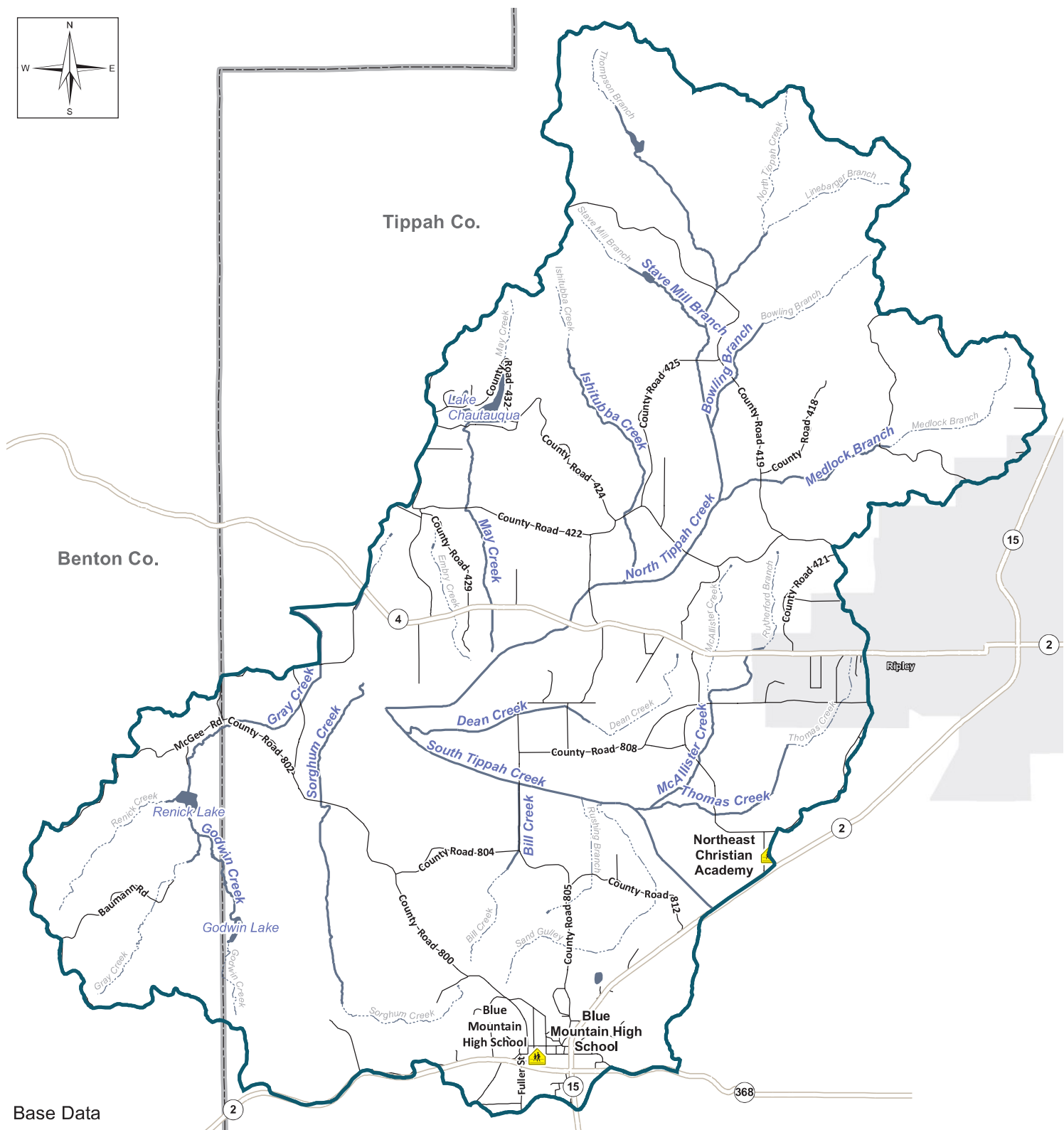
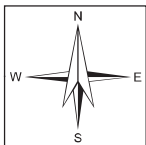
This map produced by the Department of Environmental Quality (MDEQ), Office of Pollution Control, Surface Water Division, Standards, Modeling, and TMDL Branch on **March 01, 2017**.

All map data is from the Mississippi Automated Resource Information System (MARIS), and MDEQ.

Map Projection: Mississippi Transverse Mercator

The Mississippi Department of Environmental Quality makes no warranties, expressed or implied, as to the accuracy, completeness, currentness, reliability, or suitability for any particular purpose, of the data contained on this map.





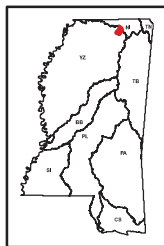
Base Data

Legend

- School
- Priority Watershed
- Major River
- Perennial Stream
- Intermittent Stream
- Large Lake/Pond
- Interstate
- US Highway
- State Highway
- Local Road
- County
- City

North Tippah Creek

080302010502



Mississippi Basins

This map produced by the Department of Environmental Quality (MDEQ), Office of Pollution Control, Surface Water Division, Standards, Modeling, and TMDL Branch on March 01, 2017.

All map data is from the Mississippi Automated Resource Information System (MARIS), and MDEQ.

Map Projection: Mississippi Transverse Mercator

The Mississippi Department of Environmental Quality makes no warranties, expressed or implied, as to the accuracy, completeness, currentness, reliability, or suitability for any particular purpose, of the data contained on this map.

